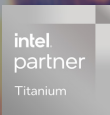


# CONCURRENT TECHNOLOGIES



Your Embedded Solutions & Systems Partner



1

## About Us

Operating on a global scale,  
Concurrent Technologies specialises in the  
design and manufacture of commercial-off-the-  
shelf and custom designed computer products  
for critical embedded applications.



Since our establishment in 1985, we have  
successfully delivered hundreds of embedded  
solutions into the Defence, Aerospace,  
Telecoms, Medical, Scientific and Industrial  
sectors.



Our operations are coordinated through our UK  
and US offices and supported by our network of  
worldwide distributors.



## We are proud members of the Sensor Open Systems Architecture (SOSA™) Consortium



The main aim of the SOSA™ architecture is to speed up and simplify the development and deployment of C4ISR systems based on open standards components.

These SOSA™ aligned systems are based on a multi purpose backplane that allows for easy reconfiguration of the VPX Plug In Cards (PICs) to create Electronic Warfare, Signal Intelligence, RADAR or other sensor based systems.

Enabling future technology upgrades and reconfiguration are two key benefits of SOSA™ aligned solutions that help reduce the cost and extend the useful life of these platforms.

# Helios

## Rugged Vision System



Helios is a rugged COTS vision computing system optimised for Size, Weight, Power and Cost (SWaP-C) and designed to operate in harsh environments.

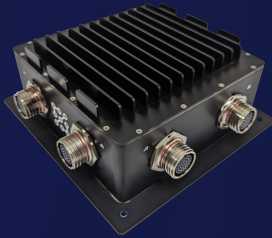
- ✓ System based on an Intel® Core™ i7 processor
- ✓ Options for a rich set of I/O and high-capacity removable storage
- ✓ GPGPU capabilities for video and graphics input/output applications
- ✓ Removable high-capacity SSD storage





# Hermod

## Rugged Switching System



Hermod is a rugged Commercial Off the Shelf (COTS) Gigabit Ethernet switch optimised for Size, Weight, Power and Cost (SWaP-C) harsh environment embedded computer network applications.

Gen II  
Coming  
Soon!

15 Port Rugged Gigabit Ethernet Switch ✓

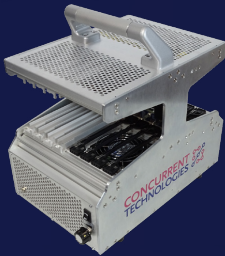
Layer 2/3+ Fully Managed ✓

Operating Temperature -40°C to 71°CSTD-461 ✓



# Vulcan

## VPX Development System



Vulcan is a ready-to-use solution for customers starting 3U VPX™ projects based on Intel® processor Plug In Cards.

8 slots for processor and peripheral boards ✓

Fabric connections with the Meritec® VP3® Cable System ✓

Supplied with built in AC power supply, uncommitted backplane and cooling fans ✓

5

Our Latest 3U VPX Solutions

## Hermes

### Rugged 3U VPX Plug In Card



Scan me  
to find  
out more!



Based on the 13th Gen Intel® Core™ i7-13800HRE Processor and designed in alignment with the SOSA™ Technical Standard for I/O intensive processor Plug In Cards.



- ✓ 14-core 13<sup>th</sup> Generation Intel® Processor
- ✓ 100G BASE-KR4 Dataplane for high throughput
- ✓ Innovative features for Real-Time and Secure applications

## TR MAX/6sd-RCx

### Rugged 3U VPX Plug In Card



Scan me  
to find  
out more!



A compute Intensive rugged Plug In Card featuring a 10-core Intel® Xeon® D-1746TER processor and 1TB direct attached storage designed for workload consolidation and server grade applications in challenging environments.



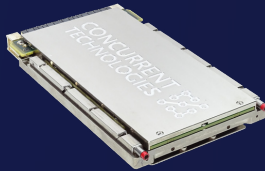
- ✓ 100G Ethernet Data plane
- ✓ Up to 128 Gbytes DDR4 memory for server grade applications
- ✓ Up to x16 PCI Express Gen 4 Expansion plane for high speed communication with adjacent PIC(s)



Our Latest 3U VPX Solutions

6

Scan me  
to find  
out more!



## TR L9x/6sd-RCx Rugged 3U VPX Plug In Card

The first processor board from Concurrent Technologies to support up to 100GBASE-KR4 Ethernet capability which makes it suitable for many future applications needing high throughput communications.

- Up to 8-core processor for high performance ✓
- Up to 100G Ethernet Data plane ✓
- PCI Express Expansion plane for high speed communication with adjacent board(s) ✓

Scan me  
to find  
out more!



## TR K9x/6sd-RCx Rugged 3U VPX Plug In Card

Based on an 11<sup>th</sup> Gen Intel® Core™ Processor which has up to 4 CPU cores mated with 16 Gbytes of soldered DDR4 DRAM with in-band Error Correction Code for high performance general-purpose compute tasks.

- Integrated GPGPU for AI and image processing ✓
- XMC site for additional compute or I/O resources ✓
- Direct-attached solid-state storage option ✓

# PR A11/6sd-RCx

## Position, Navigation & Timing Card

Rugged 3U VPX Provides resilient PNT data for sensor based solutions that are used in Electronic Warfare and Intelligence, Surveillance and Reconnaissance applications.

- ✓ Integrated multi-constellation, multi-frequency GNSS module with interference and jamming mitigation
- ✓ Chip Scale Atomic Clock (CSAC) and Inertial Measurement Unit (IMU) for assured Position Navigation and Timing



Scan me to find out more!



# TR MS7/600-RCS

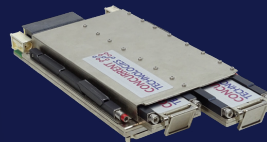
## Rugged Storage Plug In Card

A Rugged 3U VPX Conduction-cooled storage Plug In Card with 2 front removable storage modules. Suitable for high performance applications that need data mobility at the edge.

- ✓ Rugged conduction-cooled 3U VPX Storage Plug In Card
- ✓ 2x front removable conduction-cooled NVMe™ Solid State Drives
- ✓ 480GB to 8TB Capacity



Scan me to find out more!







## XM 620/x01

### M.2 Device XMC Module

XMC module with 2x M.2 sites, supporting Type 2242, 2260 & 2280 M.2 storage devices. Each M.2 device has a x4 PCI Express® (M-key) connection to the host card to optimise performance dependent on the devices fitted.

PCI Express® connectivity ✓

Variants with qualified modules available ✓

designed to suit many high performance command and control applications in the military and aerospace markets ✓



## XM 515/x24

### Gigabit Ethernet XMC Module

XM 515/x24 is an XMC module for applications that need multiple Gigabit Ethernet connectivity, is suitable for use on boards with an XMC expansion slot and is available with either front or rear I/O.

4 x Gigabit Ethernet interfaces ✓

I/O via front or XMC/PMC connector ✓

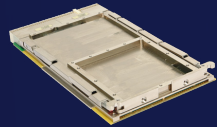
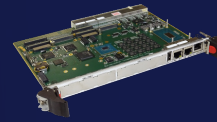
Support for Linux®, Windows® and VxWorks® ✓

# CompactPCI Solutions

Our range of 3U and 6U CompactPCI® products provide the end-user with a selection of high-performance, highly integrated and ruggedized slot controllers and peripheral controllers.

Our CompactPCI solutions utilise Intel® processor platforms and are renowned for their long-term reliability, making them an ideal choice for embedded applications that require stability from regular update cycles.

Scan me to find out more!

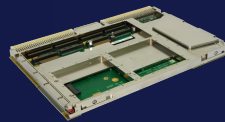
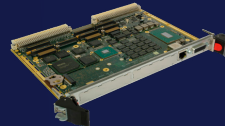


# VME Solutions

VME continues to be a well-supported and widely installed bus architecture, particularly in defense and security markets.

Based on Intel®'s processors, our portfolio of VME solutions are designed and proven to withstand extreme environmental conditions including intense vibration, shock and extended temperature ranges.

Scan me to find out more!



Scan me  
to find  
out more!



## TA GRD/nnn

### Enhanced Security Package

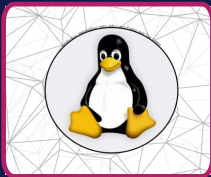
Our Guardian Security package is designed to significantly improve processor board security to make them suitable for deployment in sensitive applications. It can also be tailored to a bespoke solution for individual customer requirements.

Factory fitted security package ✓

Optional on a range of processor boards ✓

Includes hardware, firmware and software elements ✓

Scan me  
to find  
out more!



## CD LNX/BSn

### Linux Board Support Package

Our Linux Board Support Package contains:

A VME driver for our VME boards ✓

A PCI Express driver for our VPX boards ✓

A backplane driver for our CompactPCI boards ✓

Real time extension support for select boards ✓

Utilities, drivers, script files and Xorg configuration files needed by various boards ✓

